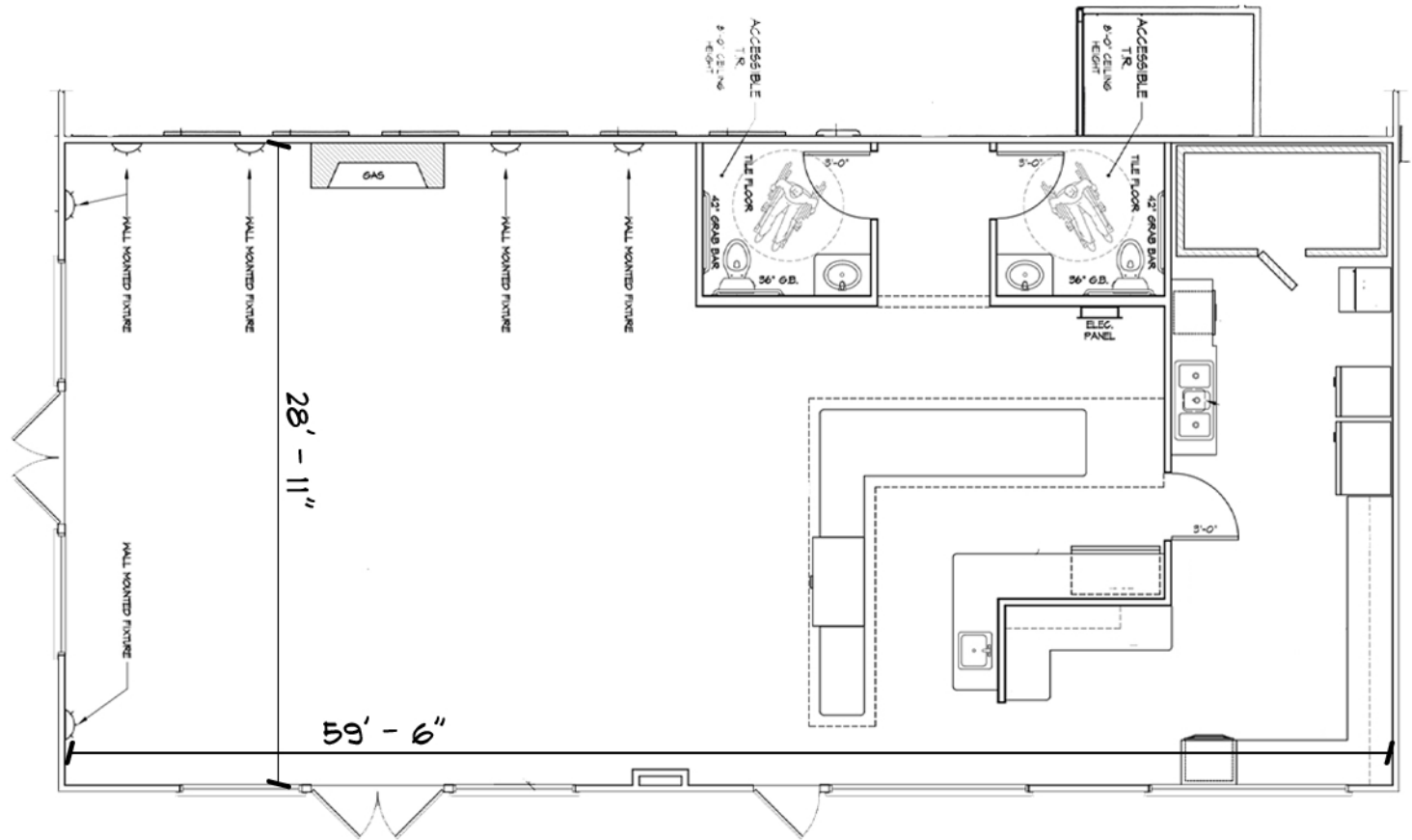
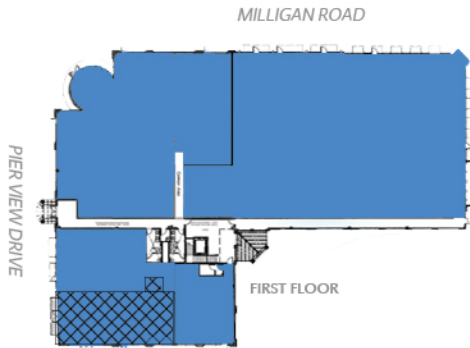


901 PIER VIEW DRIVE **RETAIL & OFFICE** | 901 PIER VIEW DRIVE IDAHO FALLS, ID 83402

FIRST FLOOR RETAIL SUITE 103 - 1881 SF



208.557.5300
snakeriverlanding.com

- Beautiful Mixed-Use Building • 2 Floors & 45,000 SF
- Located at Pier View Drive & Milligan Road along the Snake River
- Space Available starting at 202 SF to 14,200 SF